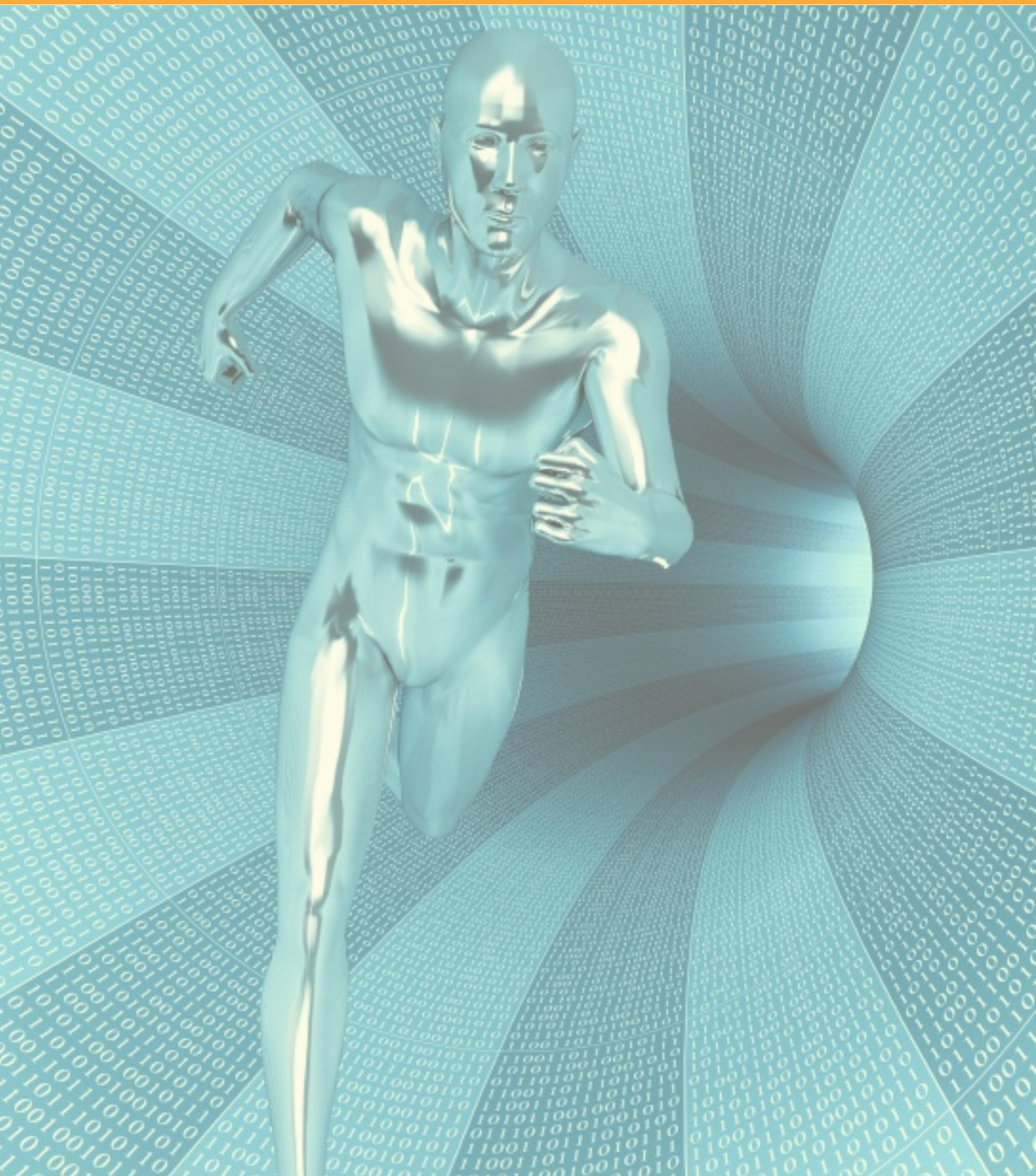


# STAHL ENDOSCOPY

ENT



# NASO-PHARYNGOSCOPES

**AUTOCLAVE**

18 min / 134° C / 273° F

## DESCRIPTION

## CAT #



Flexible Naso-Pharyngoscope  
with ETO valve

5032.300

### Naso-Pharyngoscope 3.2 mm

- Conventional image bundle, **7,000** pixels
- 2 way deflection
- One hand operation
- Includes: transport case, leakage tester, light guide 05.0086L

Working length:	300 mm
Working-Ø:	3.2 mm
Deflection:	up 140°, down 140°
Length of movable tip section:	20 mm
Viewing direction:	0°
Field of view	70°
Depth of field:	6 mm - 1,000 mm



Flexible Naso-Pharyngoscope  
with ETO valve

5032.300/16k

### Naso-Pharyngoscope 3.2 mm

- Conventional image bundle, **16,000** pixels
- 2 way deflection
- One hand operation
- Includes: transport case, leakage tester, light guide 05.0086L

Working length:	300 mm
Working-Ø:	3.2 mm
Deflection:	up 140°, down 140°
Length of movable tip section:	20 mm
Viewing direction:	0°
Field of view	80°
Depth of field:	6 mm - 1,000 mm

# NASO-PHARYNGOSCOPES

**AUTOCLAVE**

18 min / 134° C / 273° F

## DESCRIPTION

## CAT #

Flexible Naso-Pharyngoscope  
with ETO valve

5038.300

### Naso-Pharyngoscope 3.8 mm

- Conventional image bundle, **12,000** pixels
- 2 way deflection
- One hand operation
- Includes: transport case, leakage tester, light guide 05.0086L

Working length:	300 mm
Working-Ø:	3.8 mm
Deflection:	up 120°, down 120°
Length of movable tip section:	25 mm
Viewing direction:	0°
Field of view	80°
Depth of field:	6 mm - 1,000 mm



# VIDEO NASO-PHARYNGOSCOPE WITH CHIP-IN-TIP TECHNOLOGY



- Clear, full format monitor image through Chip-in-Tip video technology (CMOS)
- Bright and homogenous illumination by means of an integrated LED illumination engine
- Excellent 135° distal deflection brings hard to reach areas into view
- Thin and extremely flexible 3.8 mm diameter insertion tube optimized for more patient comfort
- Increased physician comfort due to ergonomic handpiece design
- Simple start-up, no camera adjustments or white-balance necessary due to factory video settings and LED illumination
- Absolutely silent controller
- Low cost of ownership since the all-in-one approach replaces fiber naso-pharyngoscope, camera and light source

This video naso-pharyngoscope impresses with its ease of use and high level of innovation. The improved ergonomic handpiece with easy to reach deflection lever and function buttons offers user friendly operation. Excellent engineering and the use of high quality materials lead to a long reprocessing lifetime.



# TECHNICAL DATA

## DESCRIPTION

## ITEM NUMBER

Video Naso-Pharyngoscope Set  
 Consisting of: Video Naso-Pharyngoscope, EC150 camera controller,  
 software CD (demo version), leakage tester, transport case

31.0010s.cam

## VIDEO NASO-PHARYNGOSCOPE

### OPTICAL SYSTEM

Image sensor	CMOS
Image resolution	QVGA
Field of view	85°
Direction of view	0°
Depth of field	6 – 60mm

### INSERTION TUBE

Distal end outer diameter	3.8mm
Working length	300mm
Integrated LED illumination	Yes

### BENDING SECTION

Angulation range	up 135° / down 135°
------------------	---------------------

## EC150 CAMERA CONTROLLER

### SPECIFICATIONS

Front panel controls	LED intensity control / On-Off
Outputs	2 x Video (CVBS), 1 x USB

Monitor (recommended: 15"), external recording device or PC software, disinfection wipes are available upon request.  
 Please contact us for further information.

## DETAILS



DISTAL TIP



DEFLECTION LEVER



FUNCTION BUTTONS

# STAHL

---

E N D O S C O P Y

DISTRIBUTED BY:

**SH**medical

3061 NW 82nd AVENUE  
MIAMI, FL 33122  
USA

Phone: 305-406-2222  
Fax: 305-406-2113  
E-mail: [shmedical@shmedical.com](mailto:shmedical@shmedical.com)  
[www.shmedical.com](http://www.shmedical.com)